

Paradigm®

**ci pro lcr** series v2

**ci elite lcr** series v2

OWNER'S MANUAL

# TABLE OF CONTENTS

**1.0 YOUR NEW SPEAKERS**

**2.0 HOW TO AVOID SPEAKER DAMAGE**

**3.0 YOUR LISTENING ROOM**

**4.0 SPEAKER ASSEMBLY PARTS LIST**

**5.0 SPEAKER PLACEMENT GUIDELINES**

**6.0 COLOR-MATCH PAINTING**

**7.0 INSTALLATION**

**8.0 INSTALLATION (PICTORIAL)**

**9.0 SCREEN COMPENSATION SWITCH**

**10.0 SPEAKER CONNECTION**

**11.0 TROUBLESHOOTING GUIDE**

**12.0 LIMITED WARRANTY**

# 1.0 Your New Speakers

## **YOUR NEW SPEAKERS**

Although Paradigm LCR In-Wall speakers sound great out of the carton, they will sound even better once they are broken in. Operate them for several hours before you listen critically.

High-frequency drivers use ferrofluid that can thicken at temperatures below 10° C (50° F). If your speakers have been transported or stored in the cold, let them warm to room temperature before use.

Clean speaker housing with a soft, damp cloth. Do not use a strong or abrasive cleaner or get any part of the speaker wet.

## 2.0 How To Avoid Speaker Damage

### HOW TO AVOID SPEAKER DAMAGE

**Use an appropriate amplifier.** At high volumes, a very powerful amplifier can overdrive your speakers and damage them. On the other hand, if your amplifier isn't powerful enough, it can produce clipping distortion that can easily damage high-frequency drivers. *(See your dealer.)*

**Don't be fooled by your amplifier's volume control.** It adjusts listening level—it does not indicate power output. If your speakers begin to sound harsh or grating, or if you hear the bass breaking up, turn the volume down immediately or you will damage your speakers! **This type of damage constitutes abuse and is not covered by warranty!**

**Tone controls and equalizers** can demand even more power from an amplifier, lowering the point at which it produces clipping distortion. Use them sparingly, if at all, and do not use them when listening at loud levels.

## 3.0 Your Listening Room

### **YOUR LISTENING ROOM**

The Paradigm LCR In-Wall speakers are suitable for use in a wide variety of listening environments. Note however, that room construction, dimensions and furnishings will all play a part in the quality of sound you ultimately achieve. The extra care taken in installation will result in greater listening enjoyment. Try to follow these guidelines:

- a) Strong, rigid walls and ceilings are preferred for best bass balance. For even better results, add cross-braces at about 12' (30 cm) above and below (either side) the speaker to further increase rigidity.
- b) Midrange and high frequencies are affected by room furnishings. For best sound, your listening room should contain an average amount of curtains, carpets, sofas, etc.

## 4.0 Speaker Assembly Parts List

### **SPEAKER ASSEMBLY PARTS LIST** (*one speaker*)

- 1 in-wall speaker complete with attached mounting clamps and screws
- 1 mounting template

# 5.0 Speaker Placement Guidelines

## **SPEAKER PLACEMENT GUIDELINES** (all models)

### **Location**

When installing your speaker pick a location between studs or ceiling joists. Be careful not to damage any wires when you cut the installation hole.

### **Accurate Timbre and Imaging**

Our Paradigm LCR In-Wall speakers feature wide, uniform dispersion and can be installed almost anywhere. For the most accurate timbre and imaging, place speakers approximately equal distance apart and select locations that allow sound to reach the listening area unobstructed.

### **Bass Performance**

Placing speakers near corners will emphasize bass. For more balanced sound, we recommend that you avoid corners when considering speaker placement.

## 6.0 Color-Match Painting

### **COLOR-MATCH PAINTING** *(optional)*

The grille of your Paradigm LCR In-Wall speaker is finished in neutral white to blend into any room. However, the grilles may be painted to match any decor.

Please note:

- Do not paint the surface behind the grille
- Do not use a paint roller or brush

#### **To Paint, Follow These Steps:**

- 1) Remove the grille.
- 2) In a well-ventilated area, spray a light coat of paint to the grille, letting the paint dry completely between coats. Always follow the paint manufacturer's directions.

**TIP!** Be careful to not plug the grille holes with paint. Do not paint the grilles when they are installed on the speaker.



# 7.0 Installation



**Turn your receiver/amplifier OFF before connecting speakers. This will avoid damage which may result from accidental shorting of the speaker cable.**



**Use only speaker cable that is rated for in-wall use.**

- The UL standard is CL2, CL3 and CM
- The CSA standard is FT4

For optimum sound reproduction the use of high-quality speaker cable is essential.

## 1. In-Wall Mounting

Place the mounting template onto the wall to correspond to a left/right or center channel orientation. Use a level to make sure it's straight (1a). Trace along the mounting template cut-out (Fig. 1b). Cut a hole as indicated (Fig. 1c)

For optimum performance loosely place ...

- two pieces, 8" (20 cm) to 12" (30 cm) long, of standard fiberglass insulation in the wall R-12 for 2x4" (5 cm x 10 cm) walls or R-20 for 2x6" (5 cm x 15 cm) walls. Place one piece just above and the other piece just below the mounting hole.
- a half-thick piece of fiberglass insulation, the same height as the speaker, in the wall right behind the mounting hole.

## 2. Connecting (Fig. 2a)

You are now ready to connect and install the speaker.

Connect the speaker cable. Correct polarity, or phase is critical for proper stereo imaging and bass performance.

Connect the red (+) amplifier terminal to the red (+) speaker terminal. Connect the black (-) amplifier terminal to the black (-) speaker terminal. Fasten cable to bracket with wire tie.

## SPEAKER PLACEMENT GUIDELINES *(all models)*

### 3. Installing the Speaker

**IMPORTANT!** While it is possible to use a manual screwdriver for installation, we strongly suggest using a power drill. To avoid damaging or breaking the clamps, set your drill to a LOW setting. A high power setting is NOT necessary and may cause clamps to crack or break from the added force. **Such damage is NOT covered under warranty.**

1) Set your Power Drill to the Low setting.

2) Ensure the clamps on the lip of the speaker are positioned exactly as shown in the Warning Diagrams on the top of page 6. If they are not correctly positioned, refer to these diagrams.

3) Gently push the assembly into the ceiling or wall hole (Fig. 1 d).

4) Supporting the assembly with one hand, tighten each screw (Fig. 1 e). Stop tightening when you sense resistance. If desired, engage the Screen Compensation Switch (see "Screen Compensation Switch" section on page 7).

1) Gently press the grille onto the front face of the speaker (Fig. 1 f). The magnets will ensure correct attachment.

# 8.0 Installation (pictorial)

## INSTALLATION (pictorial)

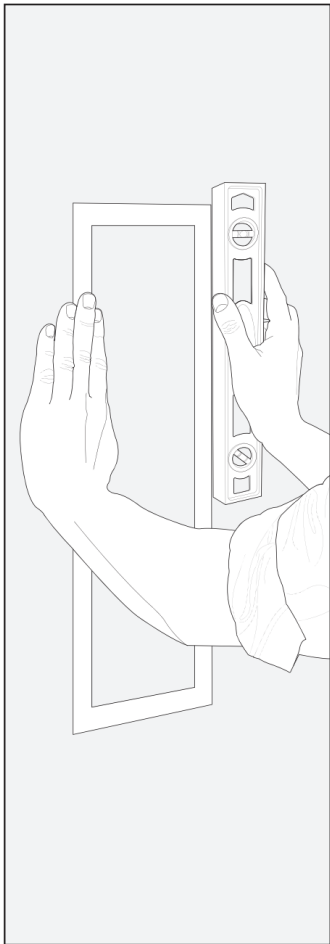
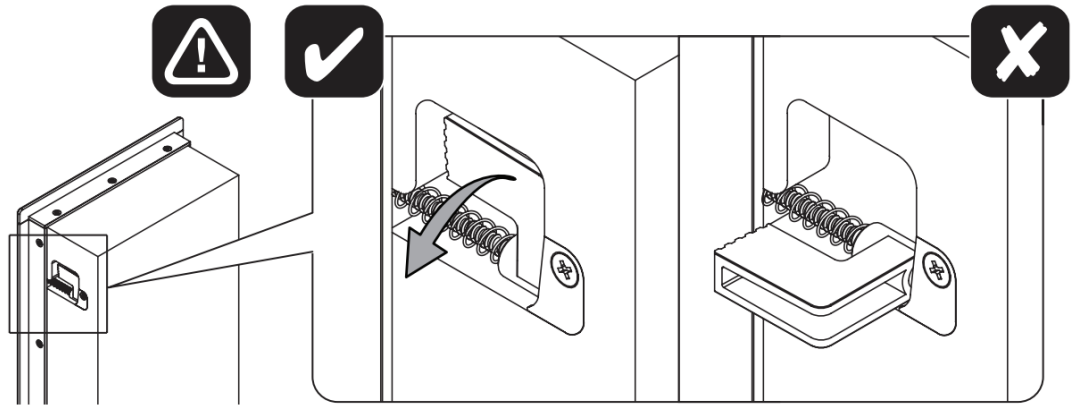


Fig. 1d



Fig. 1e



Fig. 1f

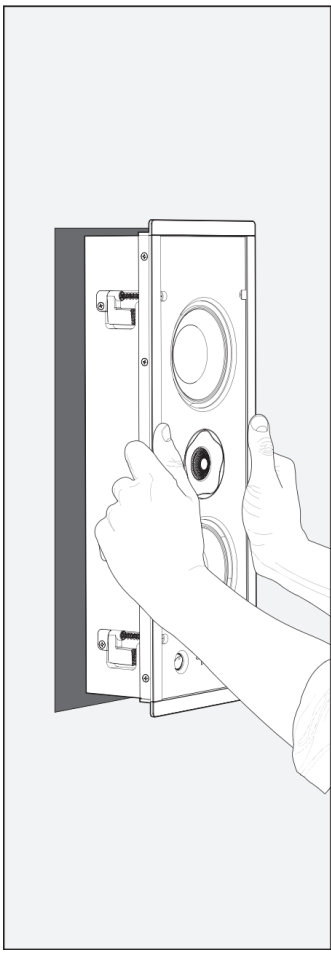


Fig. 1d

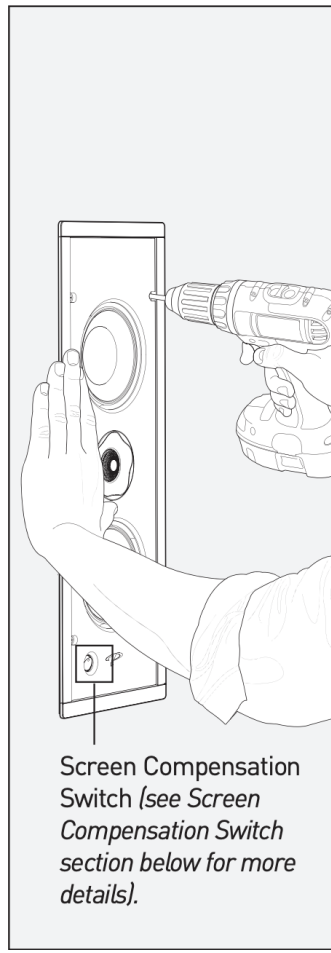


Fig. 1e

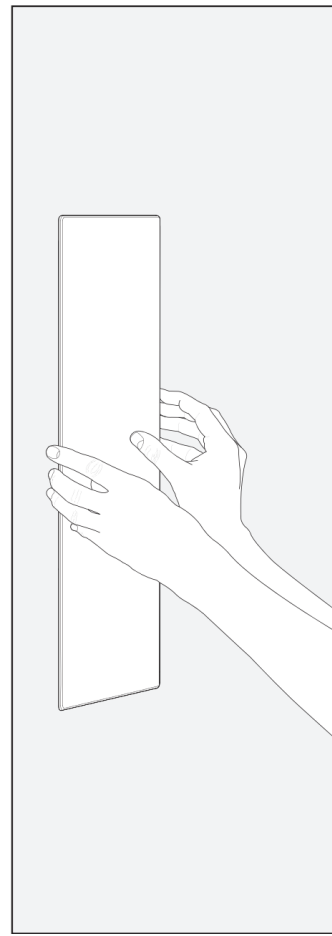


Fig. 1f

## 9.0 Screen Compensation Switch

### SCREEN COMPENSATION SWITCH

Paradigm's LCR speakers can be installed behind a micro perforated or audio transparent projection screen. Consider speaker placement when using a projector screen, so be sure to consult your dealer before installing the speakers and the screen. While high quality screens allow for sound waves to travel through without interference, each Paradigm's LCR speakers include a screen compensation feature (button located under the grille). Engaging this feature (speaker grille can be on or off) will ensure true acoustic transparency.

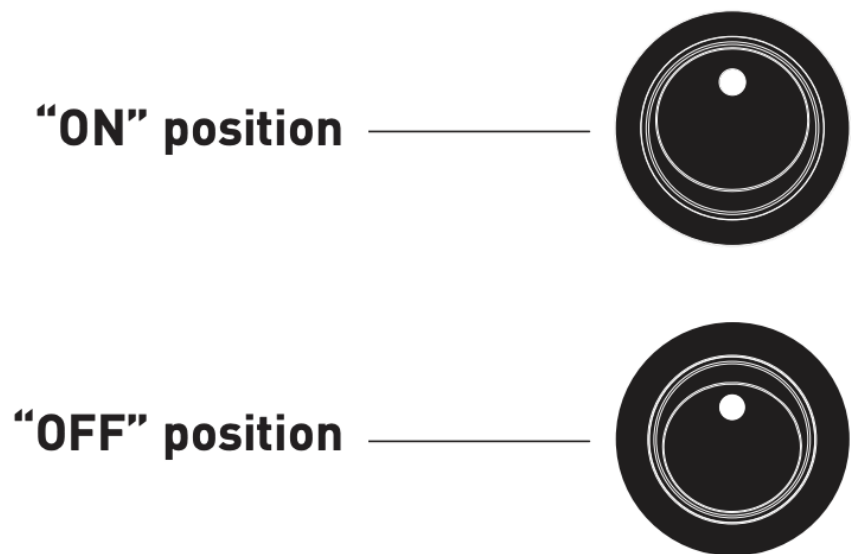


Fig. 2  
High-Frequency Respose Switch  
in "ON" and OFF positions.

# 10.0 Speaker Connection

## SPEAKER CONNECTION

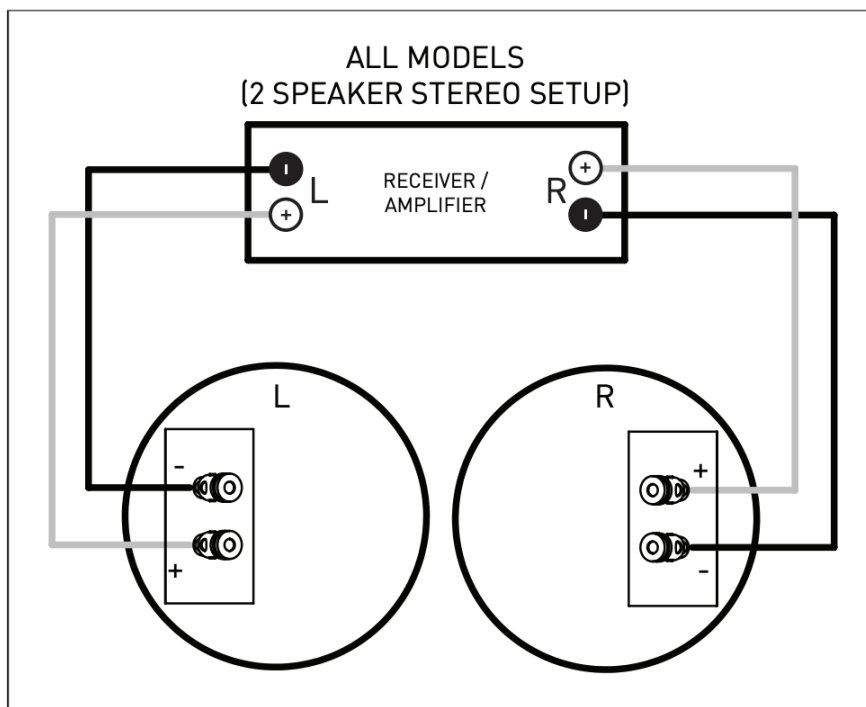


Fig. 3  
Wiring for Paradigm LCR  
In-Wall Speakers

## 11.0 Troubleshooting Guide

PROBLEM	SOLUTION
No Sound	Make sure receiver, preamp or amplifier is plugged in and turned on. Check power outlet at the wall is working. Are headphones plugged in, or is system on Mute? Re-check all connections.
No Sound from One or More Speakers	Check your balance control. Check that all power cords are properly plugged in and functioning. Swap the Left speaker cable with the Right speaker cable at the receiver/amplifier end to determine if the problem is with the speaker or something else (i.e. wiring, amplifier).
Lack of Bass or Dislocated Image (Stereo)	One or more speakers may be connected out of phase (their polarity is reversed). Re-check to ensure that each speaker's cable is connected with correct polarity: red (+) to red (+) and black (-) to black (-).

# 12.0 Limited Warranty

## LIMITED WARRANTY

Paradigm® In-Wall/In-Ceiling CI Pro and Elite Series Speakers are warranted to be and remain free of manufacturing and/or material defects for a period of **five (5)** years from the date of original purchase. Within the time period specified, repair, replacement or adjustment of parts for manufacturing and/or material defects will be free of charge to the original owner.

**Thermal or mechanical abuse/misuse is not covered under warranty.**

### Limitations:

- Warranty begins on date of original retail purchase from an Authorized Paradigm® Dealer only. It is not transferable;
- Warranty applies to product in normal residential use only. If product is subjected to any of the conditions outlined in the next section, warranty is void;
- Warranty does not apply if the product is used in professional or commercial applications;

### Warranty is Void if:

- The product has been abused (intentionally or accidentally);
- The product has been used in conjunction with unsuitable or faulty equipment;
- The product has been subjected to damaging signals, derangement in transport, mechanical damage or any abnormal conditions;
- The product (including cabinet) has been tampered with or damaged by an unauthorized service facility;
- The serial number has been removed or defaced.

### Owner Responsibilities:

- Provide normal/reasonable operating care and maintenance;
- Provide or pay for transportation charges for product to service facility;
- Provide proof of purchase (your sales receipt given at time of purchase from your Authorized Paradigm® Dealer must be retained for proof-of-purchase date).

Should servicing be required, contact your nearest Authorized Paradigm® Dealer, Paradigm Electronics Inc. or Import Distributor (outside the U.S. and Canada) to arrange, bring in or ship prepaid, any defective unit. Visit our website, [www.paradigm.com](http://www.paradigm.com) for more information.

Paradigm Electronics Inc. reserves the right to improve the design of any product without assuming any obligation to modify any product previously manufactured.

This warranty is in lieu of all other warranties expressed or implied, of merchantability, fitness for any particular purpose and may not be extended or enlarged by anyone. In no event shall Paradigm Electronics Inc., their agents or representatives be responsible for any incidental or consequential damages. Some jurisdictions do not allow limitation of incidental or consequential damages, so this exclusion may not apply to you.

**Retain manual and sales receipt for proof of warranty term and proof of purchase.**



